



GREEN GUIDANCE IN THE CURRICULUM

Presentation to NICEC

05/07/2021

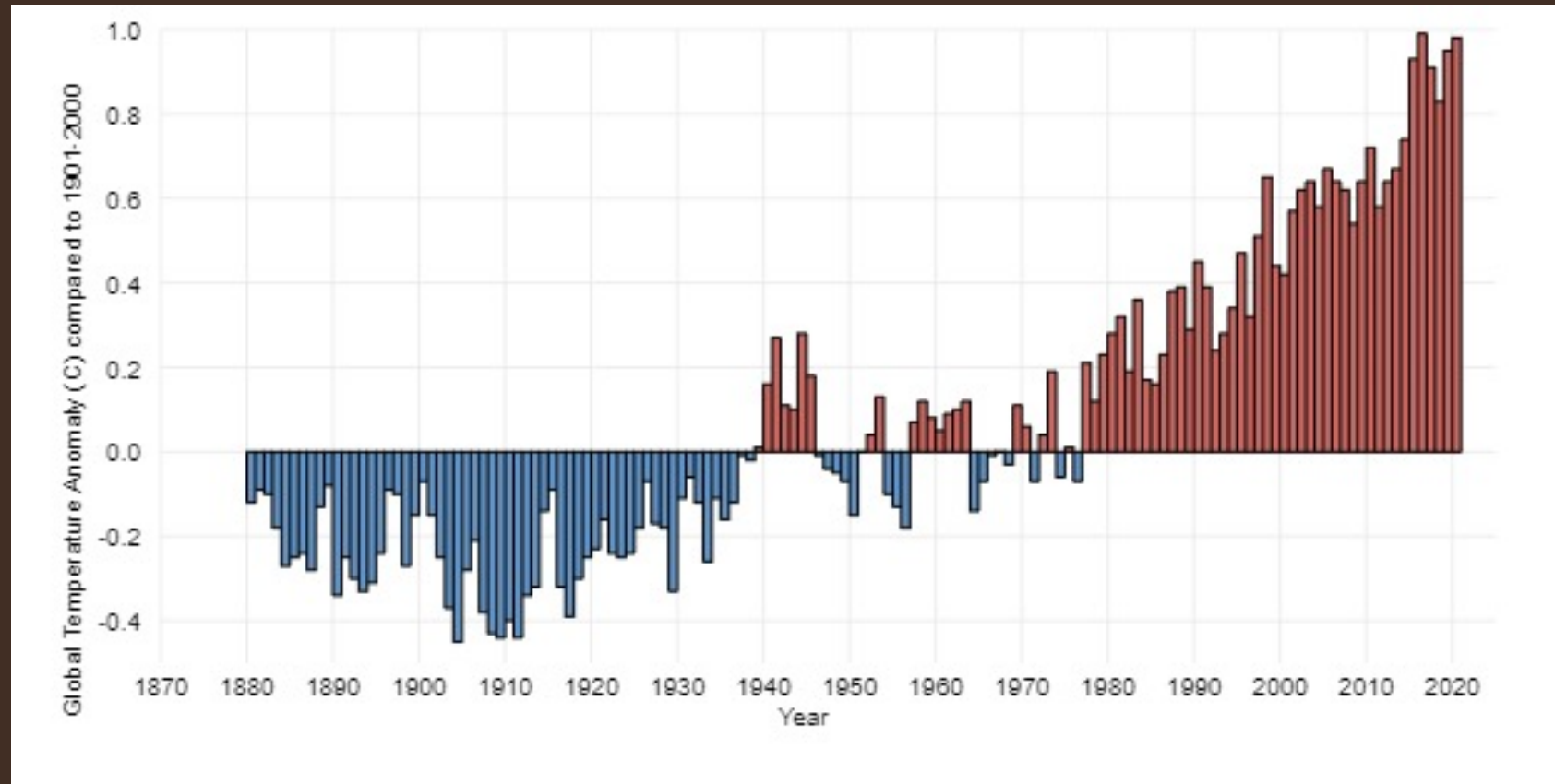
Tristram Hooley



WE HARDLY EVEN
NEED TO MAKE THE
CASE ANY MORE...



GLOBAL
SURFACE
TEMPERATURE
SINCE 1880
(*COMPARED
TO AVERAGE
1901-2000*)



THE ENVIRONMENT IS WHERE WE LIVE

- The big picture matters because it impacts on the conditions in which people live and work.
- Our environment is also shaped by numerous small decisions and policies around us.



WE ARE ALL IN IT TOGETHER, BUT...



Image from São Paulo Brazil

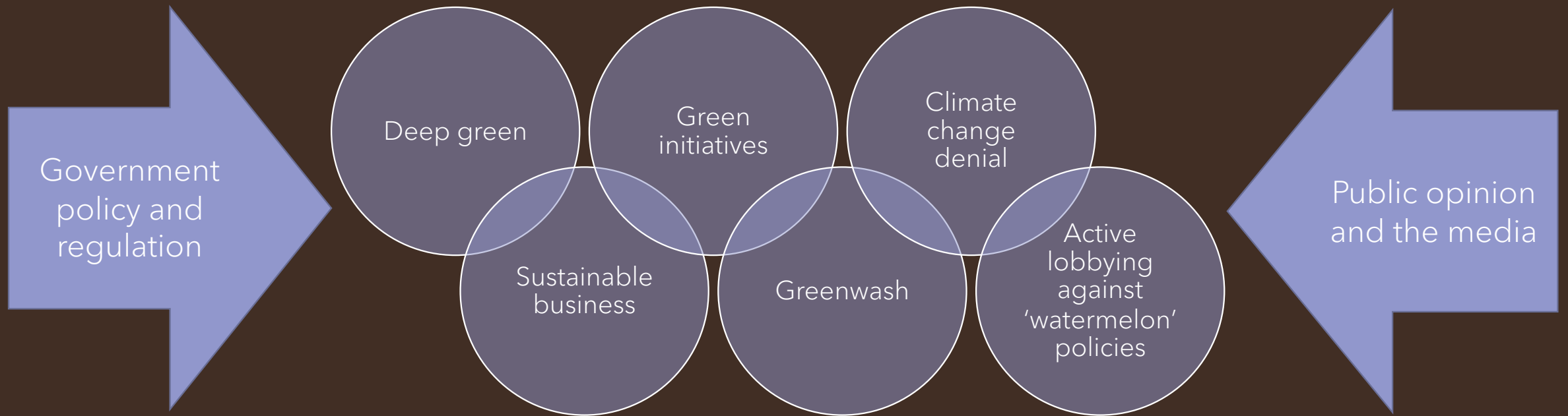
CORPORATE INFLUENCE



DELOITTE'S CFO SURVEY SAYS...

- there is an increasing pressure to act on the climate from a broad range of stakeholders;
- companies' climate responses focus primarily on measures that have a short-term cost-saving effect;
- a thorough understanding of climate risks is rare;
- few companies have a governance and steering mechanism in place to develop and implement comprehensive climate strategies; and
- targets for carbon emission reductions are usually not aligned with the Paris Agreement.

BUSINESS STRATEGIES



ENVIRONMENTAL INTELLIGENCE/CAPABILITIES

- Some interest in the idea of 'environmental intelligence'.
- This is the idea that individuals/employees should have the capability to think green and understand green issues.
- But this is emergent.
- No one is really recruiting for this across their general recruitment.





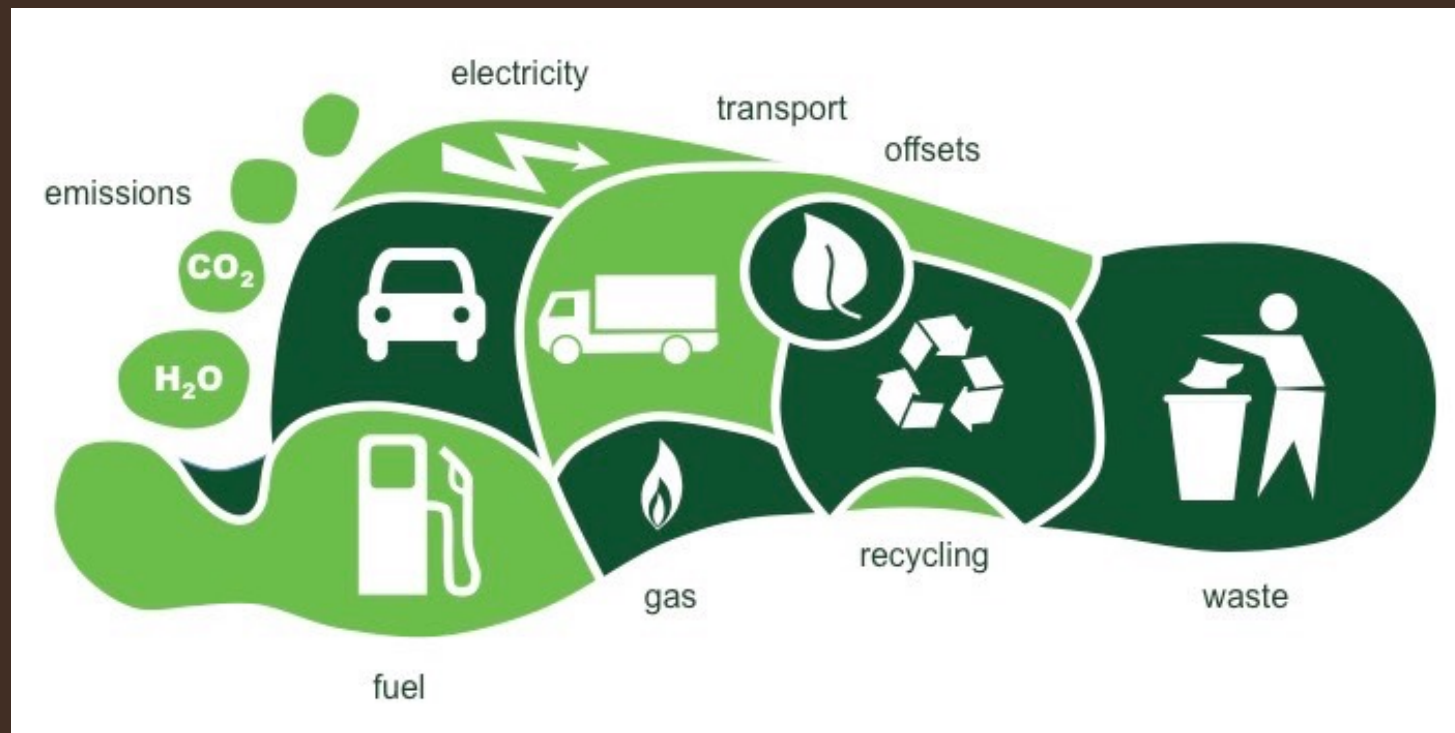
OVERHEATED

How Capitalism Broke the Planet—
and How We Fight Back

KATE ARONOFF

HOW CAPITALISM
BROKE THE PLANET

SUSTAINABILITY AS THE POLITICS OF CONSUMPTION

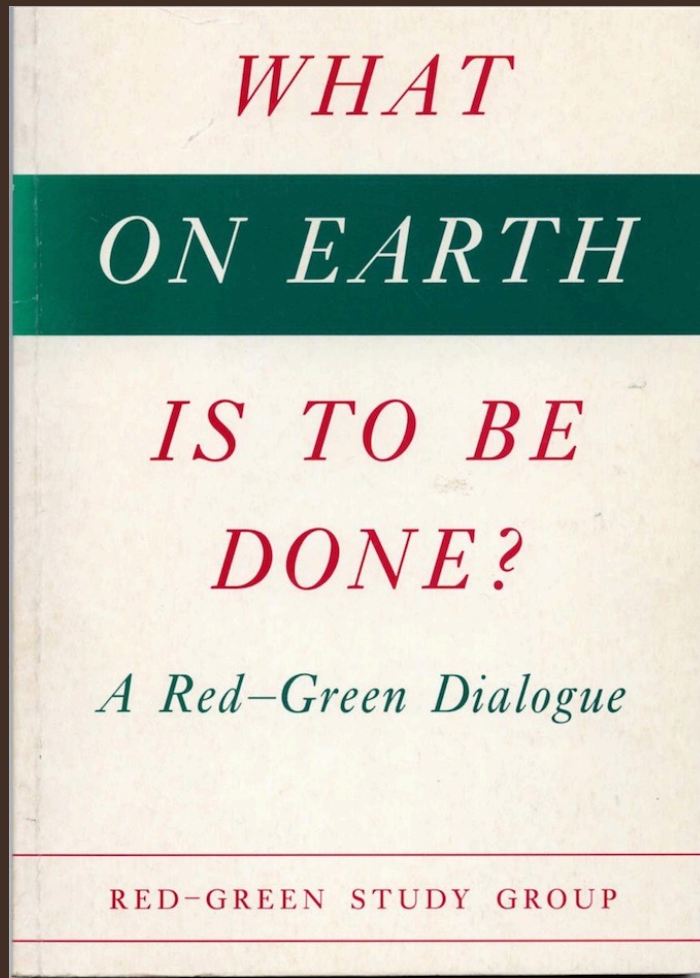




RESPONSIBILISATION
TO THE INDIVIDUAL

YOUR
COUNTRY
NEEDS
YOU...
TO RECYCLE.





WHAT ON EARTH IS TO BE DONE?

There 'are a few core value-perspectives:

- a commitment to the intrinsic worth of humans as ends in themselves, not means;
- an understanding of the importance of the environment to human well-being;
- a positive valuation of communal solidarity;
- the right of people to be actively involved in the shaping of their own lives; and, finally,
- a commitment to human equality and against all forms of oppression, whether based on class, ethnicity, gender or any other line of social division.'

(RGSG, 1995, p.8)

THE GREEN NEW DEAL

- A political approach
- Which foregrounds a system approach.
- But also the politics of production
- This (re)engages us with ideas around work and career



A group of people, mostly wearing green t-shirts and gloves, are participating in a cleanup activity in a wooded area. They are collecting trash into blue and green plastic bags. The ground is covered with dry leaves and some scattered trash like a plastic bottle and a white lid. The background shows trees with autumn foliage.

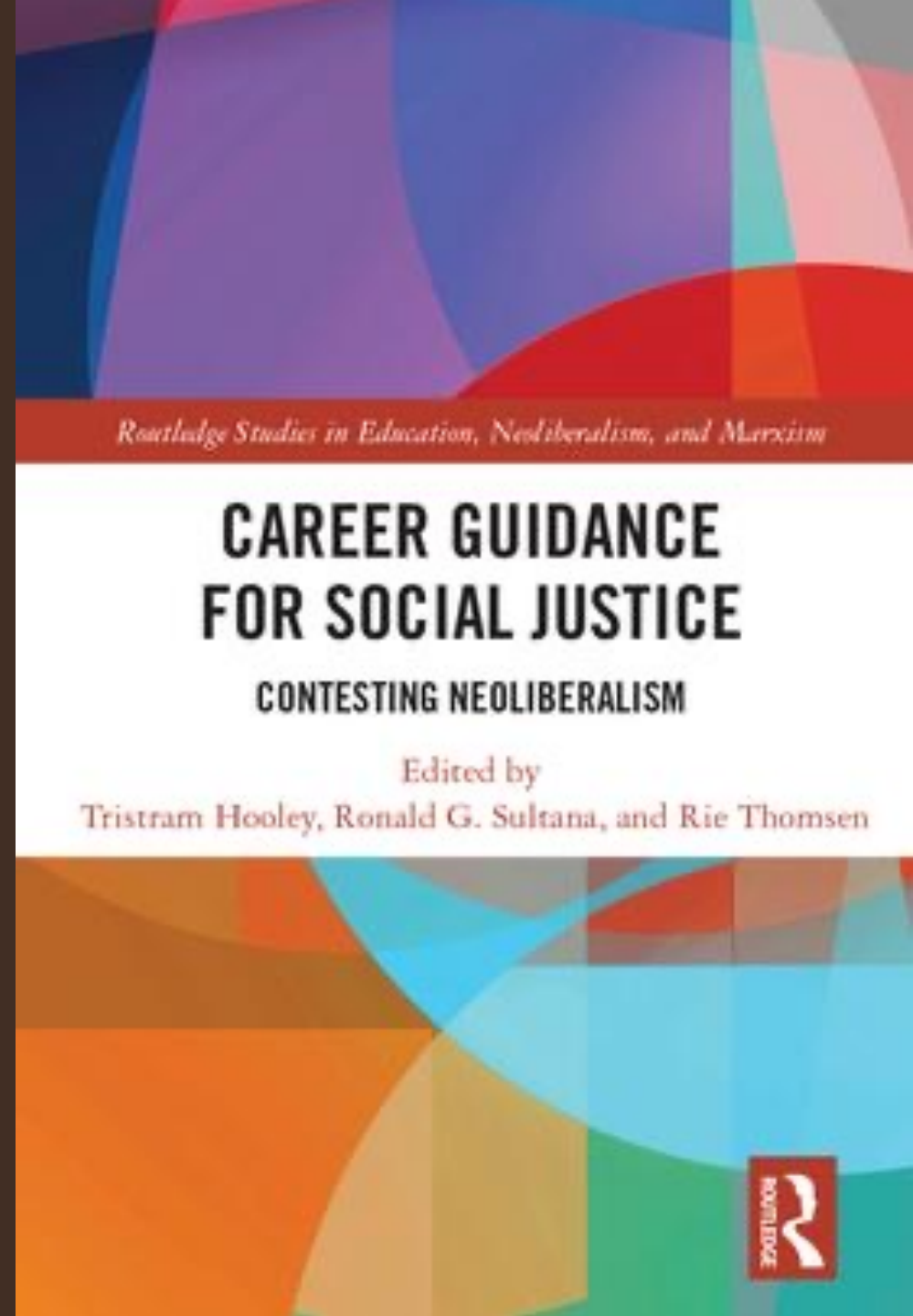
CAREER IS HOW WE RELATE TO THE WORLD
AROUND US

THIS IS NOT ABOUT CHOOSING A GREEN JOB



(RE)DEFINING CAREER GUIDANCE

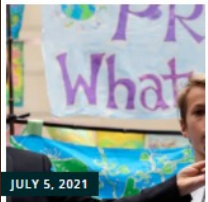
"Career guidance supports individuals and groups to discover more about work, leisure and learning and to consider their place in the world and plan for their futures... Career guidance can take a wide range of forms and draws on diverse theoretical traditions. But at its heart it is a purposeful learning opportunity which supports individuals and groups to consider and reconsider work, leisure and learning in the light of new information and experiences and to take both individual and collective action as a result of this."



Career guidance for social justice

[Home](#) [Practices](#) [Resources](#) [News](#) [Books](#) [About this site](#)

Tag: green guidance



JULY 5, 2021

Career guidance for kids is our best hope for climate change



MARCH 25, 2021

The need for green career guidance



FEBRUARY 9, 2021

Choosing problems: A sustainable development approach to career guidance in India



DECEMBER 7, 2020

'Green' Guidance

You are following this blog

Enter your email address to follow this blog and receive notifications of new posts by email.

Join 270 other followers

Follow

Comments

Action Short of a St... on
What is going on at the
Univer...

BUT WE HAVEN'T
SAID ENOUGH
ABOUT GREEN
ISSUES

SO, WHAT ON EARTH
IS TO BE DONE IN
CAREER GUIDANCE?







CLIMATE STRIKE MOVEMENT

- Young people are already engaging with these issues.
- We cannot meaningfully talk about careers in schools without recognising this context.
- So, how can we bring this into the careers curriculum?

THE CDI FRAMEWORK

What do you need to know and be able to do to have a positive career...





SEE THE BIG PICTURE

People need to see the big picture by paying attention to how the economy, politics and society connect with their own life and career. Careers practitioners should address this by engaging learners in:

- Evaluating different media, information sources and viewpoints
- Exploring and responding to local and national labour market trends
- Exploring and responding to trends in technology and science
- **Exploring and responding to the relationship between career and the environment**
- Exploring and responding to the relationship between career, community and society
- Exploring and responding to the relationship between career, politics and the economy



USING THIS IN CURRICULUM TO ADDRESS ENVIRONMENTAL ISSUES IN CAREER

Grow throughout life	Reflecting on your own impact on the environment and challenging yourself to do more to challenge climate change.
Explore possibilities	Gathering information on the environmental policies and impact of occupations, sectors and organisations.
Manage career	Considering how different climate change scenarios might impact on your career and developing individual and collective responses.
Create opportunities	Exploring how environmental activists, NGOs and sustainable businesses got started and how they are resourced and operate.
Balance life and work	Explore different life and work balances and considering their environmental impacts. Reflecting on how the normative career pattern impacts on the environment.
See the big picture	Looking at the interaction between climate change, environmental policies and career.

REFERENCES

- Aronoff, K. (2021). *Overheated: How capitalism broke the planet - And how we fight back*. Public Affairs US.
- Career Development Institute. (2021). *Career Development Framework*. Stourbridge: Career Development Institute.
- Coppola, M., Krick, T., Blohmke, J. (2019). *Feeling the heat? Companies are under pressure on climate change and need to do more*. <https://www2.deloitte.com/us/en/insights/topics/strategy/impact-and-opportunities-of-climate-change-on-business.html>
- Hooley, T., Sultana, R. and Thomsen, R. (2018). *Career guidance for social justice: Contesting neoliberalism*. London: Routledge.
- Linsey, R. & Dahlman, L. (2021). Climate change: Global temperature. <https://www.climate.gov/news-features/understanding-climate/climate-change-global-temperature>
- Lukacs, M. (2017). Neoliberalism has conned us into fighting climate change as individuals. *The Guardian*. <https://www.theguardian.com/environment/true-north/2017/jul/17/neoliberalism-has-conned-us-into-fighting-climate-change-as-individuals>
- Puiu, T. (2019). Major oil corporations spent \$1 billion on climate lobbying against Paris Agreement-related regulations. *ZME Science*. <https://www.zmescience.com/science/news-science/oil-corporations-lobbying-04235/>
- Red-Green Study Group. (1995). *What On Earth is To Be Done?* Manchester: Red-Green Study Group.

ABOUT ME

Tristram Hooley, Professor of Career Education, University of Derby

Email: tristram.hooley@gmail.com

Blog: <http://adventuresincareerdevelopment.wordpress.com>

Twitter: [@pigironjoe](https://twitter.com/pigironjoe)

SUMMARY

- Climate change and wider environmental issues are becoming increasingly important for our careers.
- Organisations are struggling with these issues, but we shouldn't turn to them for leadership.
- A critical approach, linked to wider consideration of social justice, provides us with the best framework for considering these issue as part of career management.
- Career education provides an important space within which we can get individuals thinking about environmental issues.