



**Social Impact Report
2017-2018**

Registered company limited by guarantee: 9952509 (England and Wales)
Address: Cornbrook Centre, 70 Quenby Street, Manchester M15 4HW

Contents

1. Welcome	3
2. Vision and mission	4
3. Summary of our year in numbers	5
4. Summary of the value we add	6
4.1 Our work	7
4.2 Our people	11
4.3 Community re-investment, local suppliers and environment	12

1. Welcome

Welcome to our social impact report which includes our social return on investment.

This report shares our success and demonstrates the value that our services bring to the communities that we serve in terms of fiscal savings, social value and local economic value.

As you would expect, we monitor and evaluate the outputs, outcomes and impact of our work routinely. This information has been used within this report.

Where it is possible to do so, a financial value, (fiscal saving and/or social value and/or local economic value), has been placed on the impact we deliver using the figures provided within the national TOMS database and New Economy Manchester Unit Cost Database.

The New Economy Manchester Unit Cost Database contains national costs derived from government reports and academic studies. The costs cover crime, education and skills, employment and economy, fire, health, housing and social services. The derivation of the costs and the calculations underpinning them have been quality assured by New Economy in co-operation with HM Government.

The national TOMS database provides a minimum reporting standard for measuring social value. The values contained within it are agreed by the Social Value Taskforce. Taskforce participants include Greater Manchester Combined Authority and Star Procurement (Stockport, Trafford and Rochdale).

In future we will continue to publish annual Social Impact Reports that evidence the effectiveness of the support we provide to children, families and local communities.

2. Vision and mission

Our vision

The full participation of all children and families including those from minority ethnic backgrounds, in an equal and fair society through the achievement of a significant improvement in psychological health and mental wellbeing, and the prevention of problems with mental health.



Our mission

To provide evidence based, effective and culturally competent interventions that address the psychological and mental health of children and their families (including parents and other carers) and improve mental well-being. We aim to achieve a significant improvement in the accessibility and appropriateness of services for black and minority ethnic children and their families.

30.5%-68% of our beneficiaries were from BME communities



Family Group Conferences – 30.5%

Therapy – 45% & 32%

Expert witness reports – 68%

3. Summary of our year in numbers

Our year in numbers (1)



57 adults and 48 children benefited from therapy

EXPERT WITNESS



17 expert witness assessments completed – 13 adults and 31 children



84 family conferences engaged 147 children



120 professionals and 150 community members trained



10 professionals supervised

Our year in numbers (2)



5 trainee psychologists and 1 trainee therapist placements for 3-9 months



1 GCSE work placement for 1 week



13 new Cultural Consultants

3653 hours volunteered by placements and interns

375 hours volunteered by our team and cultural consultants



5 graduate psychologist internships for 6 months



Work for 1 director, 3 p/t employees and 18 associates

4. Summary of the value we add

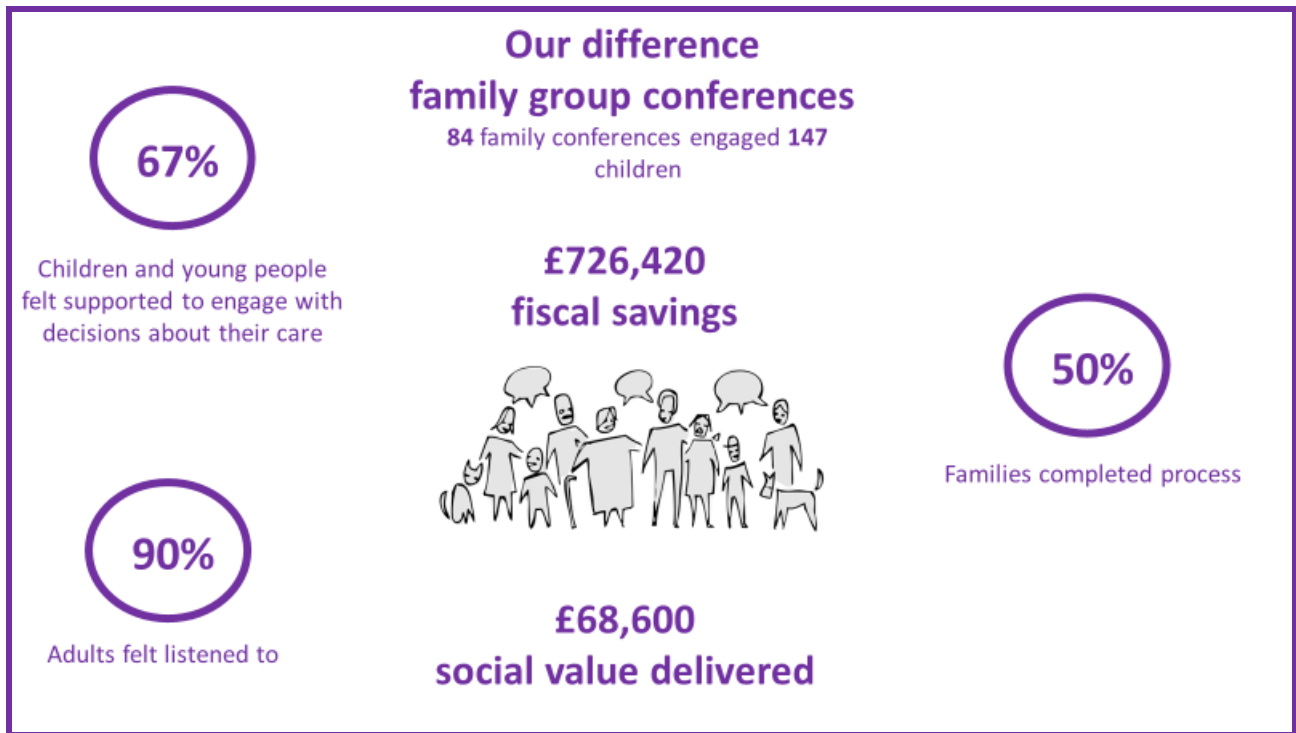
The value we add



The value we add



4.1 Our work



83%

Referred children and families engaged

95%

Children said it was a positive experience

98%

Adults said it was a positive experience

Our difference therapy

Therapy sessions engaged 57 adults and 48 children

£302,621
fiscal savings



£149,412
social value delivered

75%

Children showed improvements in resilience, coping mechanisms and self-esteem

64%

Adults reported improvements in resilience, coping mechanisms and self-esteem

70%

Adults reported reductions in parenting stress

Our difference – Therapy

“My child really enjoyed coming and looking forward to every session”



“My child really enjoyed the session which is a big part of her issues. The carers were very helpful and caring towards my child”

“The staff emphasised with my daughter and myself giving us time at the end of the session to listen and advice not just for my daughter but me as the carer”

“Everything! It has been amazing. Luke is much happier and is remembering the skills that have been taught. Can't thank Sunrise and their team enough”

“Parents made to feel welcome by facilitators, make it enjoyable with no pressure, put them through their paces even after a hard day at school”

Our difference expert witness

17 assessments, with 13 parents
and 31 children

68%

Cases with psychological
assessment that took full
account of racial and cultural
background of child/family

£799,140
fiscal savings

EXPERT
WITNESS



Our difference training

8 training courses,
10 community awareness events
and 3 Cultural Consultancy sessions

↑23%

Attendees reported
average of 23% increase
in knowledge,
understanding and
confidence in cultural
competence

£32,963
social value delivered



150

Community members
awareness raised

120

Professionals
trained

13

Cultural Consultants
trained

Our difference - training

Cultural competence

Opened view on cultural impact on family

Take time to listen to families

Thinking about putting family experiences at the fore



Attachment and Safeguarding across cultures

Made it personal to evoke us to think about a culture from a different perspective

It was helpful to think about my own personal culture/background to have a starting point/reference."
"The informative and interesting way that we were encouraged to explore different cultures"
"Liked whole group discussions and content of session was really interesting. Has helped me think about how I may adapt my practice

Our difference professional supervision

£4,382
social value delivered



4.2 Our people

Our difference placements, internships and volunteers



5 trainee psychologists and 1 trainee therapist placements for 3-9 months



1 GCSE work placement for 1 week



5 graduate psychologist internships for 6 months



Our team volunteered 375 hours

£73,168
social value delivered

Our difference our team

Work for 1 director, 3 p/t employees, 18 associates and 13 Cultural Consultants



£176,924
Local economic value delivered

4.3 Community re-investment, local suppliers and environment

Our difference

Community re-investment

£25,997
social value delivered



Local suppliers

£18,643
social value delivered



£31,701
economic value delivered

Environment

£10
social value delivered



679 miles cycled