



**Social Impact Report
2016-2017**

Registered company limited by guarantee: 9952509 (England and Wales)
Address: Cornbrook Centre, 70 Quenby Street, Manchester M15 4HW

Contents

1. Welcome	3
2. Vision and mission	4
3. Summary of our year in numbers	5
4. Summary of the value we add	6
4.1 Our work	7
4.2 Our people	11
4.3 Community re-investment, local suppliers and environment	12

1. Welcome

Welcome to our social impact report which for the first time includes our social return on investment.

This report shares our success and demonstrates the value that our services bring to the communities that we serve in terms of fiscal savings, social value and local economic value.

As you would expect, we monitor and evaluate the outputs, outcomes and impact of our work routinely. This information has been used within this report.

Where it is possible to do so, a financial value, (fiscal saving and/or social value and/or local economic value), has been placed on the impact we deliver using the figures provided within the national TOMS database and New Economy Manchester Unit Cost Database.

The New Economy Manchester Unit Cost Database contains national costs derived from government reports and academic studies. The costs cover crime, education and skills, employment and economy, fire, health, housing and social services. The derivation of the costs and the calculations underpinning them have been quality assured by New Economy in co-operation with HM Government.

The national TOMS database provides a minimum reporting standard for measuring social value. The values contained within it are agreed by the Social Value Taskforce. Taskforce participants include Greater Manchester Combined Authority and Star Procurement (Stockport, Trafford and Rochdale).

In future we will publish annual Social Impact Reports that evidence the effectiveness of the support we provide to children, families and local communities.

2. Vision and mission

Our vision

The full participation of all children and families including those from minority ethnic backgrounds, in an equal and fair society through the achievement of a significant improvement in psychological health and mental wellbeing, and the prevention of problems with mental health.



Our mission

To provide evidence based, effective and culturally competent interventions that address the psychological and mental health of children and their families (including parents and other carers) and improve mental well-being. We aim to achieve a significant improvement in the accessibility and appropriateness of services for black and minority ethnic children and their families.

**46% of our service users were from
BME communities**



Family Group Conferences

Therapy

Expert witness reports

3. Summary of our year in numbers

Our year in numbers (1)



17 adults and 5 children benefited from therapy

EXPERT WITNESS



12 expert witness assessments completed



78 family conferences engaged
90 children and 409 adults



139 professionals trained



11 professionals supervised

Our year in numbers (2)



2 trainee psychologist placements for 1 year



1 GCSE work placement for 30 hours



3870 hours volunteered by 3 placements and 4 interns

88 hours volunteered by 10 others



4 graduate psychologist internships for 6 months



Work for 1 director, 1 employee and 12 associates

4. Summary of the value we add

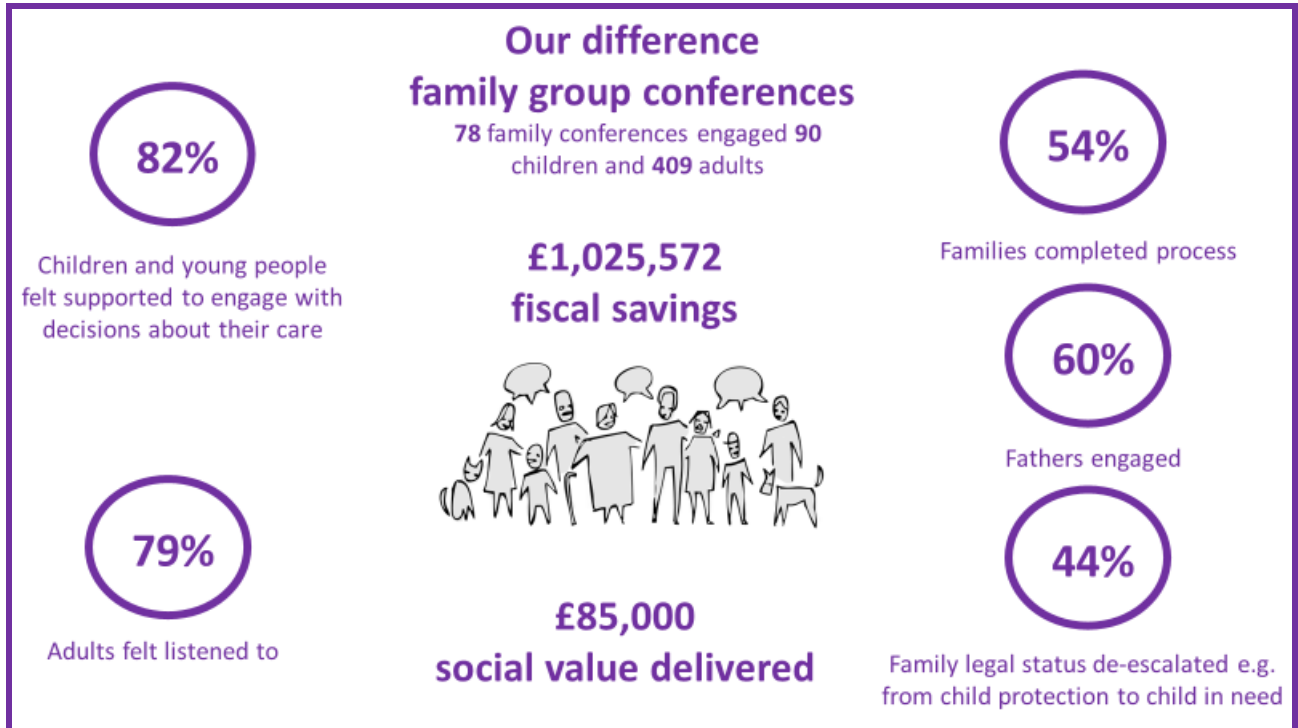
The value we add



The value we add



4.1 Our work



70%

Referred children and families engaged

90%

Children said it was a positive experience

80%

Adults said it was a positive experience

Our difference therapy

Therapy sessions engaged **17** adults and **5** children

£71,166
fiscal savings



£27,029
social value delivered

65%

Children showed improvements in resilience, coping mechanisms and self-esteem

60%

Adults reported improvements in resilience, coping mechanisms and self-esteem

60%

Adults reported reductions in parenting stress

Our difference therapy

I didn't think it would be as helpful as it was. I thought I knew everything but I learnt a lot



It was helpful to listen to other people in the group and hear their stories

Our difference expert witness

75%

Cases with psychological assessment that took full account of racial and cultural background of child/family

£316,056
fiscal savings

EXPERT
WITNESS



"I think it is an excellent report. It is thorough, comprehensive, and extremely clear in its content and conclusions. I would be obliged if you could please pass on my gratitude to (your expert) for having taken the time and effort to compile such a helpful report"

53%

Children returned to their families

Our difference professional supervision

100%

Satisfaction with wellbeing improved

£606
social value delivered



Our difference training

90%

Attendees reported measurable increases in knowledge, understanding and confidence in cultural competence

£6,337
social value delivered



6 training courses engaged 139 professionals

- Cultural Awareness
- Emotional Health & Wellbeing of BME pupils
- Child Advocacy and Family Group Conferences
- Working with Diversity and Difference
- Commissioning and Psychology in the 3rd Sector
- Salford INA Counselling Support

Our difference training

Learnt how to put theoretical knowledge into practice

Informative and enjoyable



Good balance of theory, opportunities to share our experiences and practical suggestions to help children in schools

4.2 Our people

Our difference placements, internships and volunteers



2 trainee psychologist placements
for 2-3 days per week for 1 year



1 GCSE work placement for 30 hours



4 graduate psychologist internships
for 2 days per week for 6 months



10 others volunteered 88 hours

£72,797
social value delivered

Our difference our team

Work for 1 director, 1 employee
and 12 associates



£112,993
Local economic
value delivered

£236
Social value
delivered

4.3 Community re-investment, local suppliers and environment

Our difference

Community re-investment

£18,356
social value delivered



Local suppliers

£12,986
social value delivered



£11,904
economic value delivered

Environment



20% journeys by public transport, cycling or walking