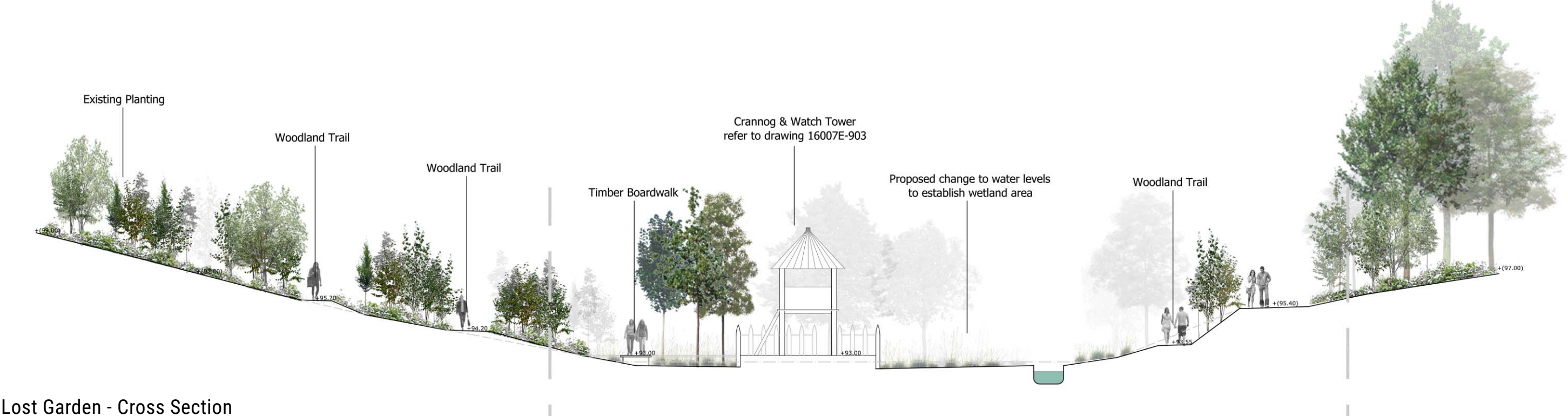
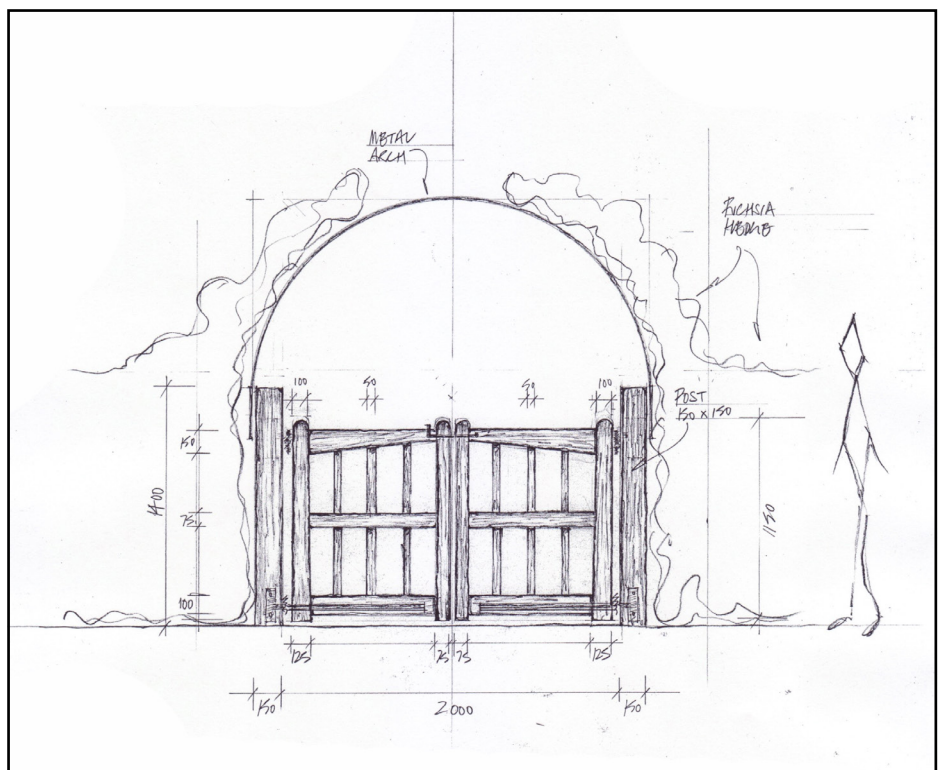
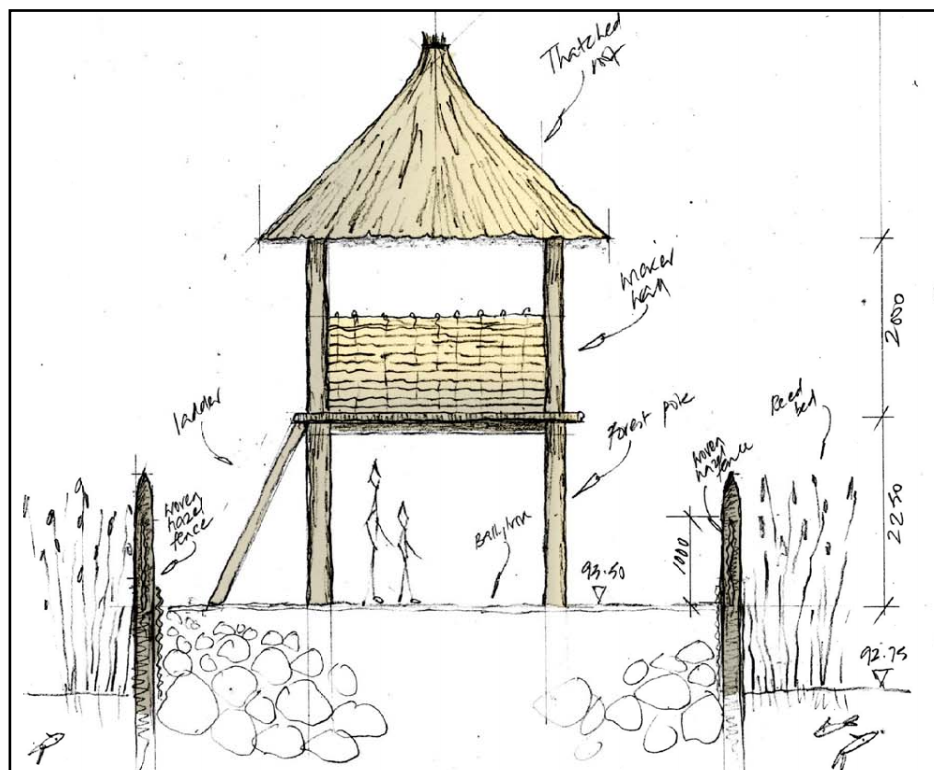
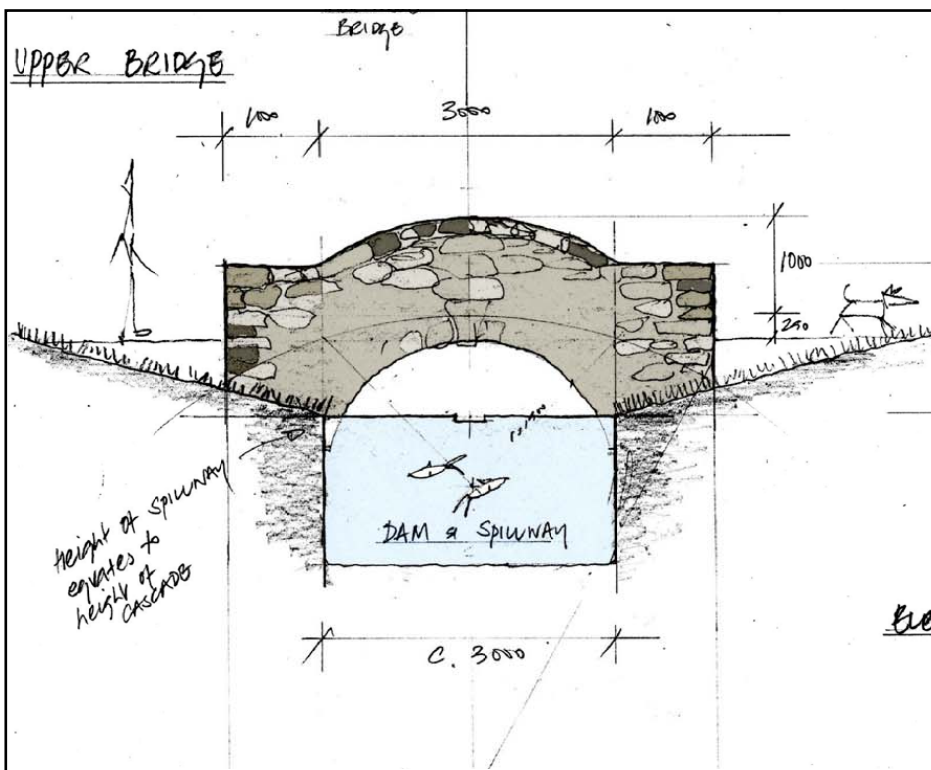
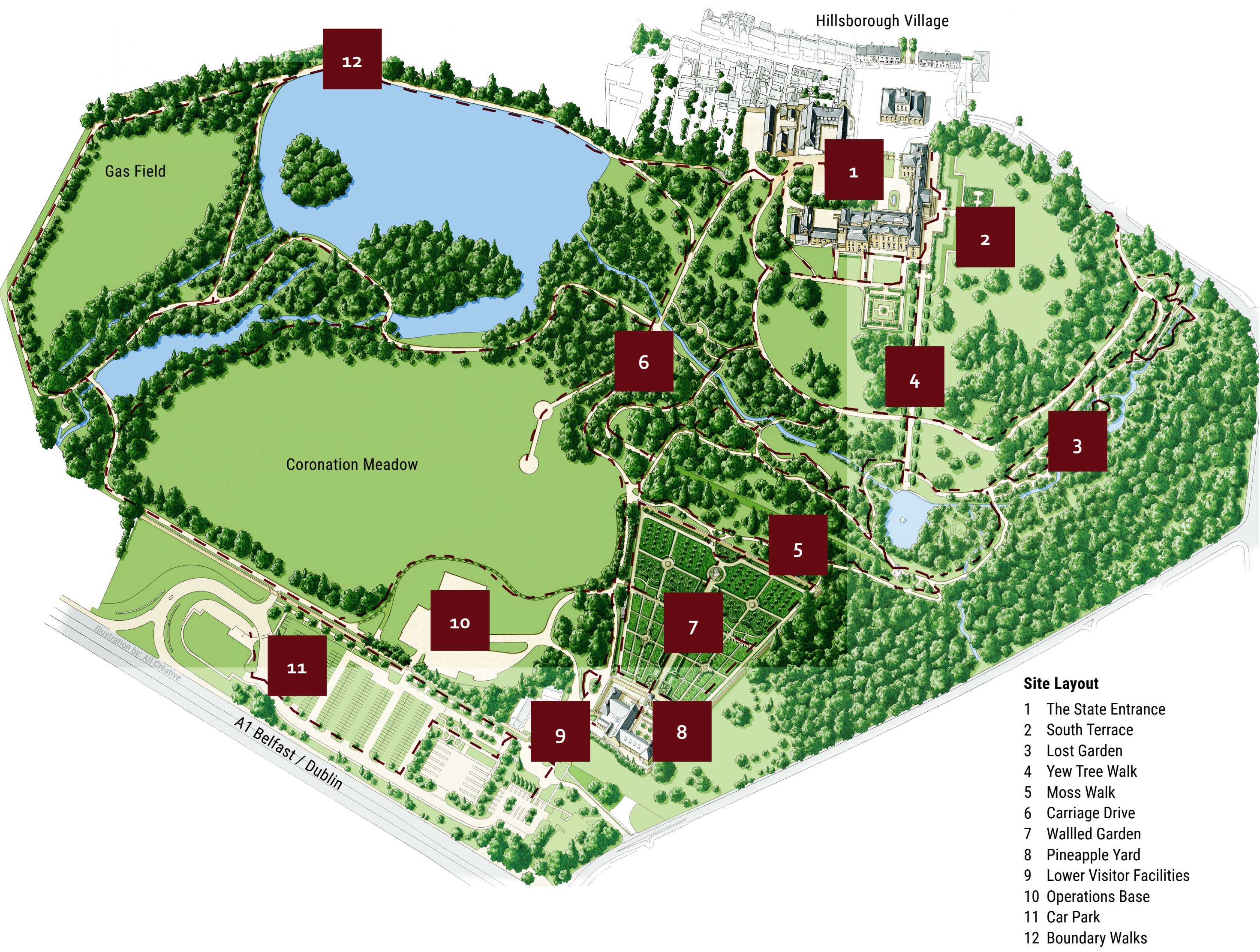
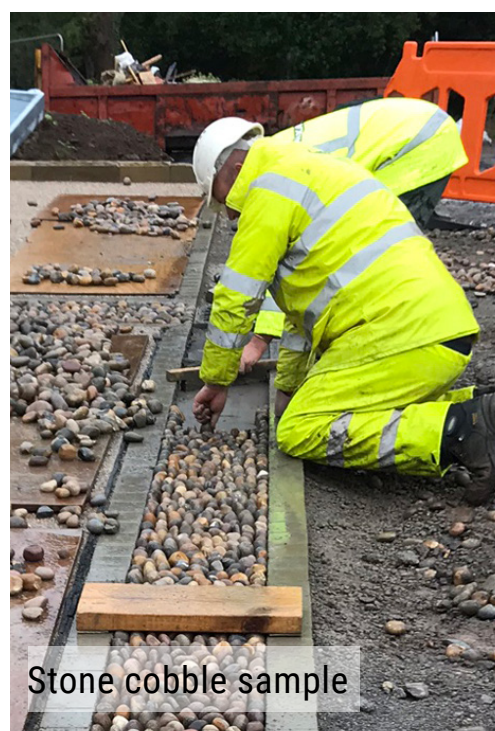


HILLSBOROUGH CASTLE & GARDENS

the paul hogarth company



IRISH LANDSCAPE INSTITUTE
INSTITIÚID TÍRDHREACHA NA hÉIREANN

LANDSCAPE HERITAGE / 2020

HILLSBOROUGH CASTLE & GARDENS

the

paul hogarth

company



Hillsborough Castle is an 18th Century home set in 98 acres. It is the royal residence in Northern Ireland, home to the Secretary of State and the setting of landmark political decisions throughout Northern Ireland's history. During the decades leading up to the present day the grounds became the forgotten backdrop, large sections became overgrown and fell into disrepair.

In 2014 Historic Royal Palaces took over the operation of Hillsborough Castle and Gardens and embarked on a major restoration project. The aim of the project was to open what was once described as a 'locked away hidden gem'. Through ambitious planning, £20 million investment, two years of design and two further years of construction, the doors have been opened for all; reintroducing a rich and vibrant historic landscape.

You would be forgiven for assuming the heritage and culture of Hillsborough Castle and Grounds sits squarely in the 18th century. However, there are many stories to tell spanning many centuries, reaching back as far as medieval times and as recent as the latter part of the 20th Century. The richness of Hillsborough's heritage and culture shaped the brief, the client's mantra 'delight in the detail', became integrated to each aspect of the process.



Throughout the design and the delivery extreme care was taken to protect the many built, landscape and ecological heritage assets. The pioneering use of a Construction Management Contract enabled access to local materials as well as direct engagement with a wide range of local specialist contractors, craftsman and suppliers in a way that would not normally be the case. This enabled the project to showcase the too often forgotten traditional skills of regional talent.

During construction, the project was used as an opportunity to engage with volunteer groups and young apprentices to further engender support for heritage and traditional skills. Strong links established with the local horticultural college supported the propagation of a large number of plants, now laid out within the grounds. To ensure the legacy of learning and promotion of heritage continues, a dedicated volunteer and operations base was delivered as part of the works.

At every opportunity care was taken to bring the past into the present in an exciting and engaging way. You don't need to scroll too far through Google to read the visitor reviews, confirming the success. Providing Hillsborough Castle and Gardens a future as vibrant as its past.

