

CHERRYWOOD BUSINESS PARK, BLOCK F

murray & associates
landscape architecture

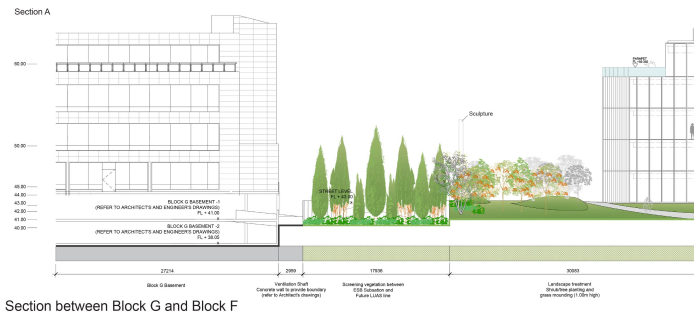
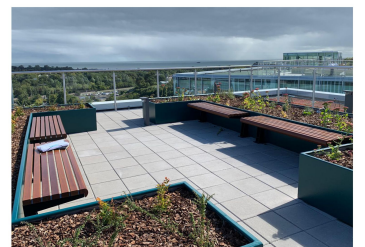
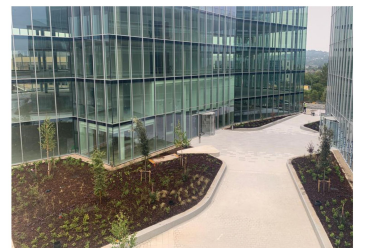
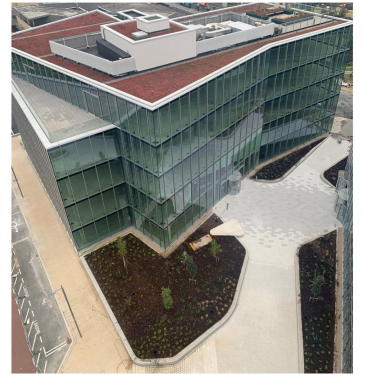
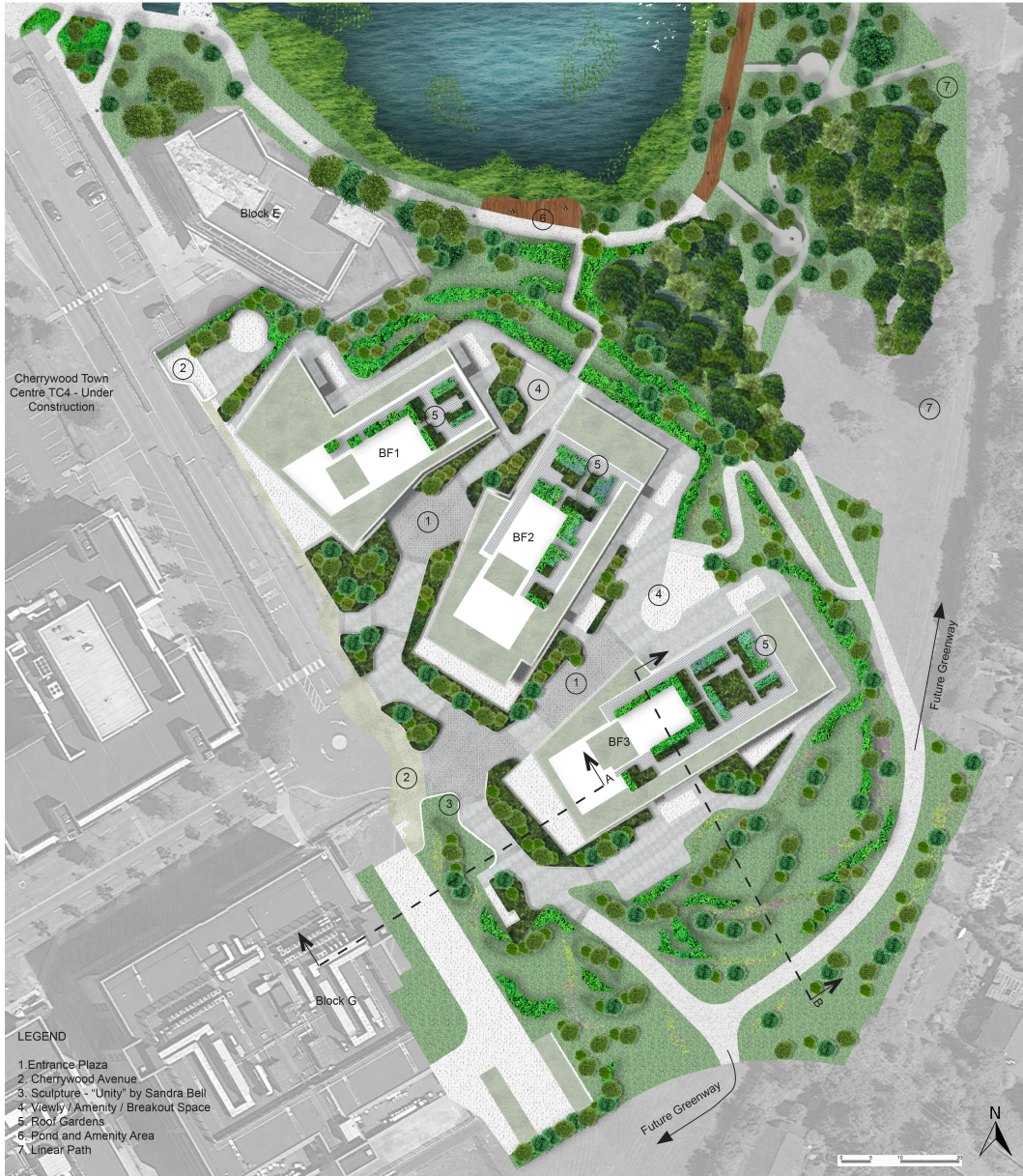
In the emerging new town that will become Cherrywood, Co. Dublin, Block F is currently part of the business park. But the context is changing, with new town centre residential and mixed use developments being built at present around the Luas line, a short distance to the west. The Block F Office Development will form part of a future public realm, connecting the town centre with the linear park to the east and south and the greenway linking Shankill to Cabinteely and Fowrock.

The landscape design for Block F creates a lush, verdant setting to anchor the three office buildings and create a comfortable and stimulating environment for the future workers and biodiversity benefits to the local environment. The primary spaces are the plaza areas between the office buildings, Blocks F1, F2 and F3. The proposals aim to animate the spaces and ensure activity particularly around the entrance to F3. A focal sculpture designed by Sandra Bell is proposed which will create a landmark focal element in the public realm at the cross axis of the public circulation routes. On the streetscape, this will add to the animation and activation of the public realm in this area. The focal element will also act as a beacon that will be visible from the greenway, adding to sense of place and way-finding.

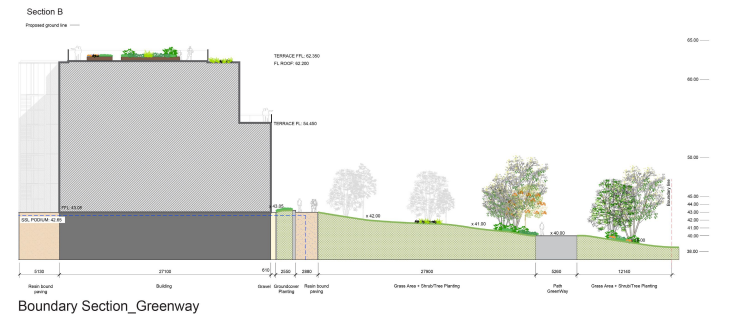
The plaza edges are defined by sculptural concrete walls and kerbs which rise to create planting depths and seating edges, and fall again to ground level in linear, but sinuous and serpentine forms. Paving in these areas is reconstituted granite in a variety of grey tones, creating banding in the pavements and defining spaces further. Planting will include a mix of native and non-native trees, specimen shrubs, groundcovers, ferns and perennials to give year-round colour, scent and texture, as well as a boost to local biodiversity. The site has stunning views east of Killiney Hill, Ballybrack Church, Bray Head and out across the Dublin Bay to Howth and the Irish Sea horizon. The amenity spaces to the east of the site make the most of these views, whilst the roof gardens enjoy panoramic views of the coastal landscape and the Dublin and Wicklow Mountains to the south and west, and Dublin city to the north.

LOCATION : Cherrywood
APPROX. AREA : 2.5 hectares
YEAR : 2016 - On Going
CLIENT : Spear Street Capital

DESIGN TEAM :
Architect: HJL Architects
Engineer: MMOS
M&E Engineer: OCSC
Project Manager: Virtus PM
Sculptor: Sandra Bell



Section between Block G and Block F



Boundary Section_Greenway