

Dublin Landings

Bernard Seymour Landscape Architects

Linking North Wall Quay and Mayor Street and situated within Dublin Landings, this brand new street is part of a network formed within this block and is North-South in orientation, mid-way between Castleforbes Rd. and New Wapping Street. Its design permits low volumes of vehicular traffic, with a corridor of 5m width at the narrowest point, while making determined moves to convey that this is nevertheless primarily a pedestrian space. It's a landscape first and a road second.

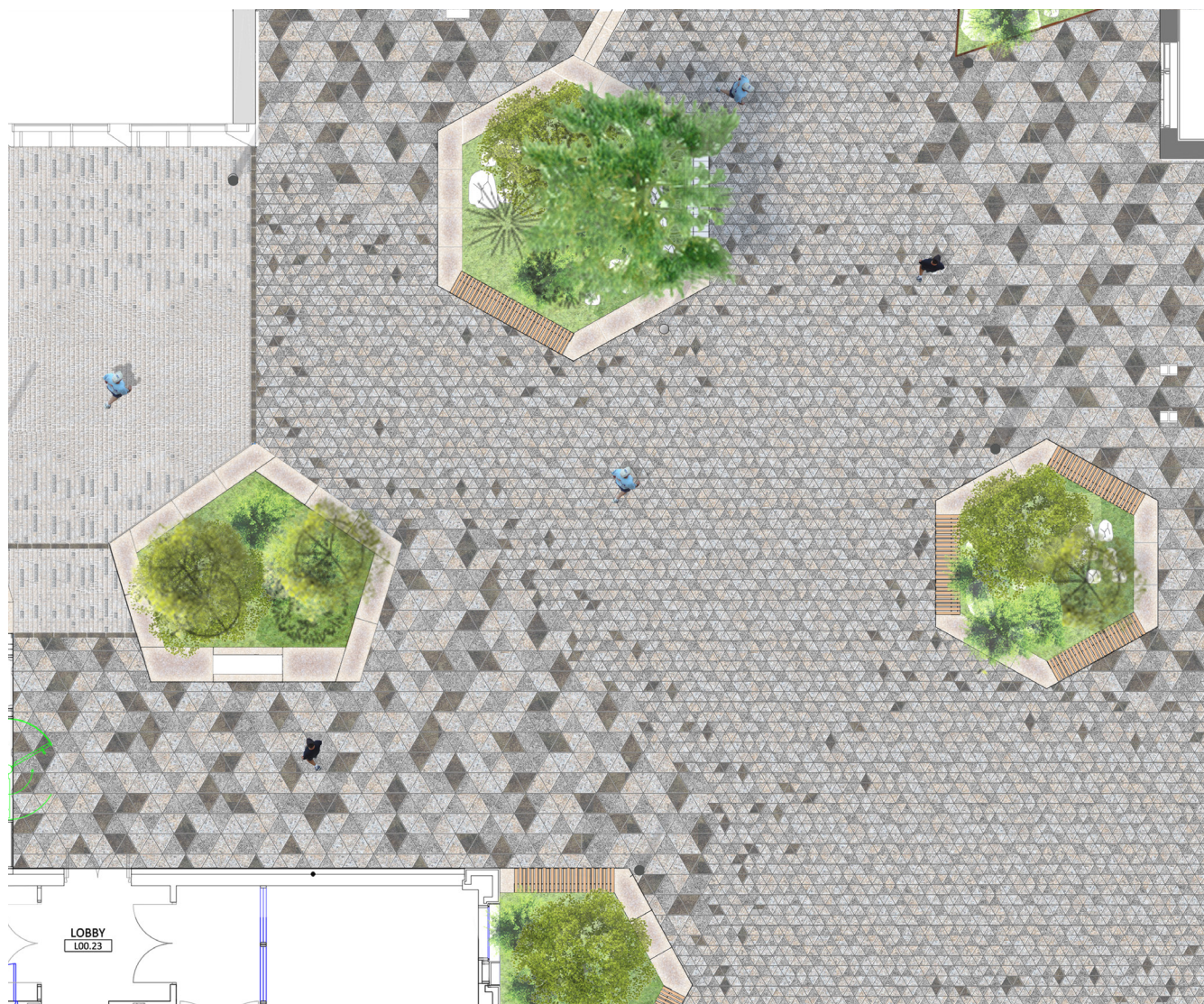
The perception of pedestrian hierarchy is achieved by a combination of key factors. The change of rhythm and texture to the surface material registers as an unfamiliar road surface for car users, subliminally inducing caution in the driver's mind to slow down. New City Street simultaneously offers a generous sequence of pedestrian enclaves, with a great deal of planting, either recessed in the slab or with low walls. The car travel route remains unmarked and therefore recedes in prominence. In order to ensure there are no jarring pinch points, the geometry of the raised planters is manipulated so that they appear to 'slide' past their opposing counterparts thus successfully demonstrating the wayfinding strategy as a negotiation between pedestrians and vehicles.

The planted nature of the street invites people to meet, to sit and stay. The asymmetrical balancing of the elements such as planting,

seating and lighting is both a visual and a safety consideration. The components of building, street and landscape work successfully together and are best appreciated as one moves through and around the composition.

As it isn't "taken in charge" we have been able to deploy a whole series of devices to subliminally make the transition from the surrounding streets. Travelling inwards from the "edges" we begin with almost imperceptible modifications in tone and texture, gradually intensifying their nature and frequency, so that on reaching the mid-way point, the shift in the lighting mood, in the ratio of planted to paved and deploying the more distinctive stone patterning, have made the transformation from street to plaza. It is really a "mise-en-scène" awaiting the arrival of the ground floor cafes and associated kiosks planned for the street. Great care has been taken with the tree selection, Scots pines, in varying and picturesque patterns of growth are in deep pockets and an underplanting that brings the smell and touch of the woodland understorey is now thriving.

As a local genius loci emerges, the arrival of the full mix of residents, workers, shops and cafes is eagerly awaited as the catalyst for full activation of the spaces and the final ingredient in delivering identity, quality, comfort, warmth, verdure and real sense of place.



Render plan drawing of the central plaza at the nexus of New City Street



Detail plan drawing of material interfaces



There are plenty of seating opportunities and the trees register



A palette of grey granite, hardwoods and loose planting compliment planting from 2019



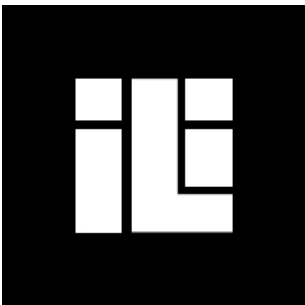
View looking south to North Wall Quay. The lights tie in with the adjacent Central Bank public realm



Protection is provided to the plaza by a setting of trees and benches. A café is yet to open with spill out onto this area



A newly planted section



IRISH LANDSCAPE INSTITUTE
INSTITIÚID TÍRDHREACHA NA hÉIREANN

DESIGN AWARDS 2020