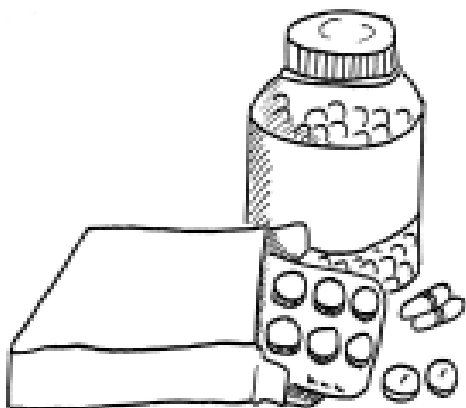


Painkillers

Ibuprofen

Ibuprofen is also called Nurofen



People take ibuprofen if they are in pain, have swelling or have a high temperature.

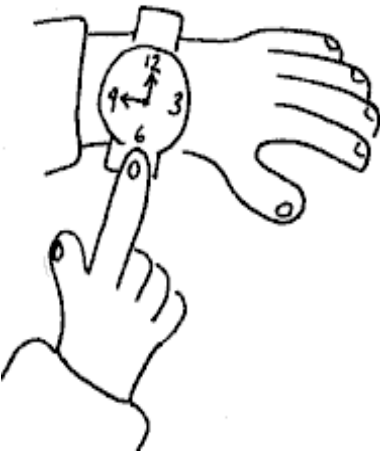
This is not an official manufacturers patient information leaflet

How Do I Take It?



Ibuprofen should be taken with water.

You should eat before taking it.



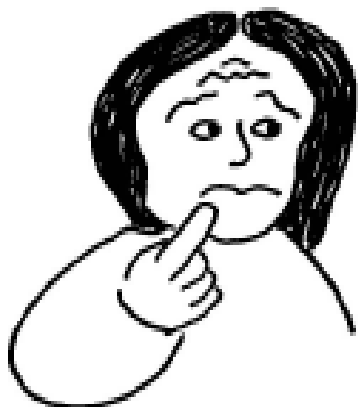
You should wait 4 hours before taking more.

You should only take it 3 times a day.

Talk to your doctor if you are still ill after 3 days.

Ibuprofen takes about 1 - 2 hours to start working. It lasts for 5 - 10 hours.

Be Careful!



Do not take ibuprofen if you have ever had a stomach ulcer.

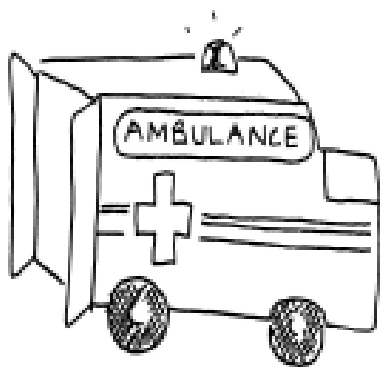
Do not take ibuprofen if you have asthma.



Talk to your doctor or pharmacist if you are taking any other medication or if you are pregnant.

If you get a bad stomach after taking ibuprofen you should call your doctor.

What should I do if I take too many? (Overdose)



Call a doctor or an ambulance straight away if you think you have taken too many.

Speak to your doctor or pharmacist if you want to know more about Ibuprofen.



The Elfrida Society publish leaflets on lots of different conditions, procedures and medications.

Call us on:
020 7359 7443