

AN INNOVATIVE MODEL OF INTEGRATED CARE WARWICKSHIRE & COVENTRY

**David Widdas MBE, Consultant Nurse,
South Warwickshire NHS Foundation Trust
Coventry & Warwickshire Partnership Trust**

INTEGRATION.

TRUST

INFORMED
COMMISSIONING

SEE MY
CHILD NOT
JUST
PROBLEMS

SOCIAL
OPPORTUNITIES

SINGLE
APPROACH



SOMEONE
TO CALL

JOINED UP
APPROACH

SAY IT
ONCE

HELP MY CHILD
RETURN TO
SCHOOL

COMMONLY A DIVIDED & INFLEXIBLE SYSTEM

A
Fragmented
System

CC

Care
Packages

CCNs

Palliative
Care

Social
Support

Voluntary
Providers

Training

Respite

Social
Care

Education

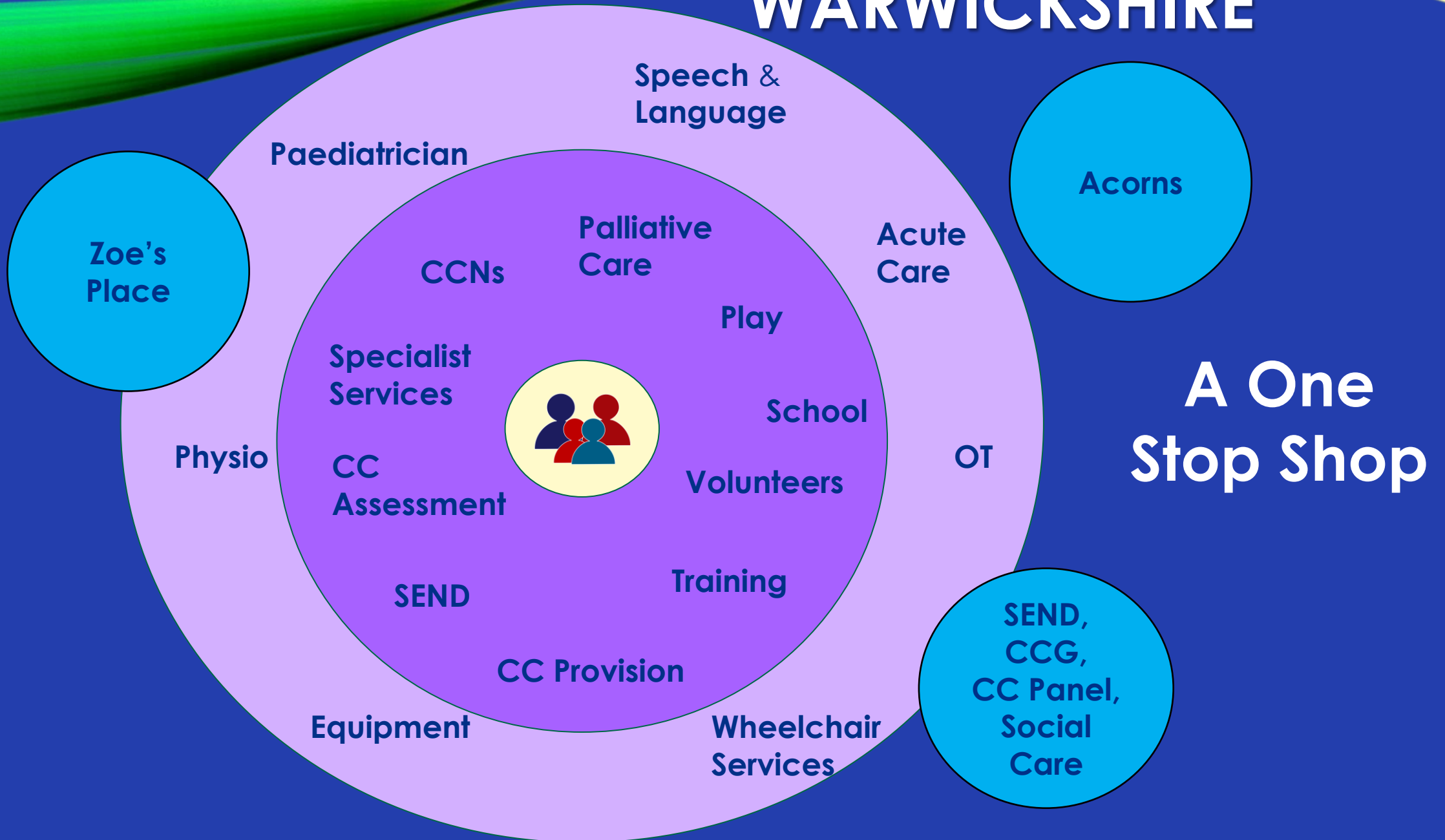
Housing
Adaption

“I don't know where
to go, its always
someone else's
responsibility”

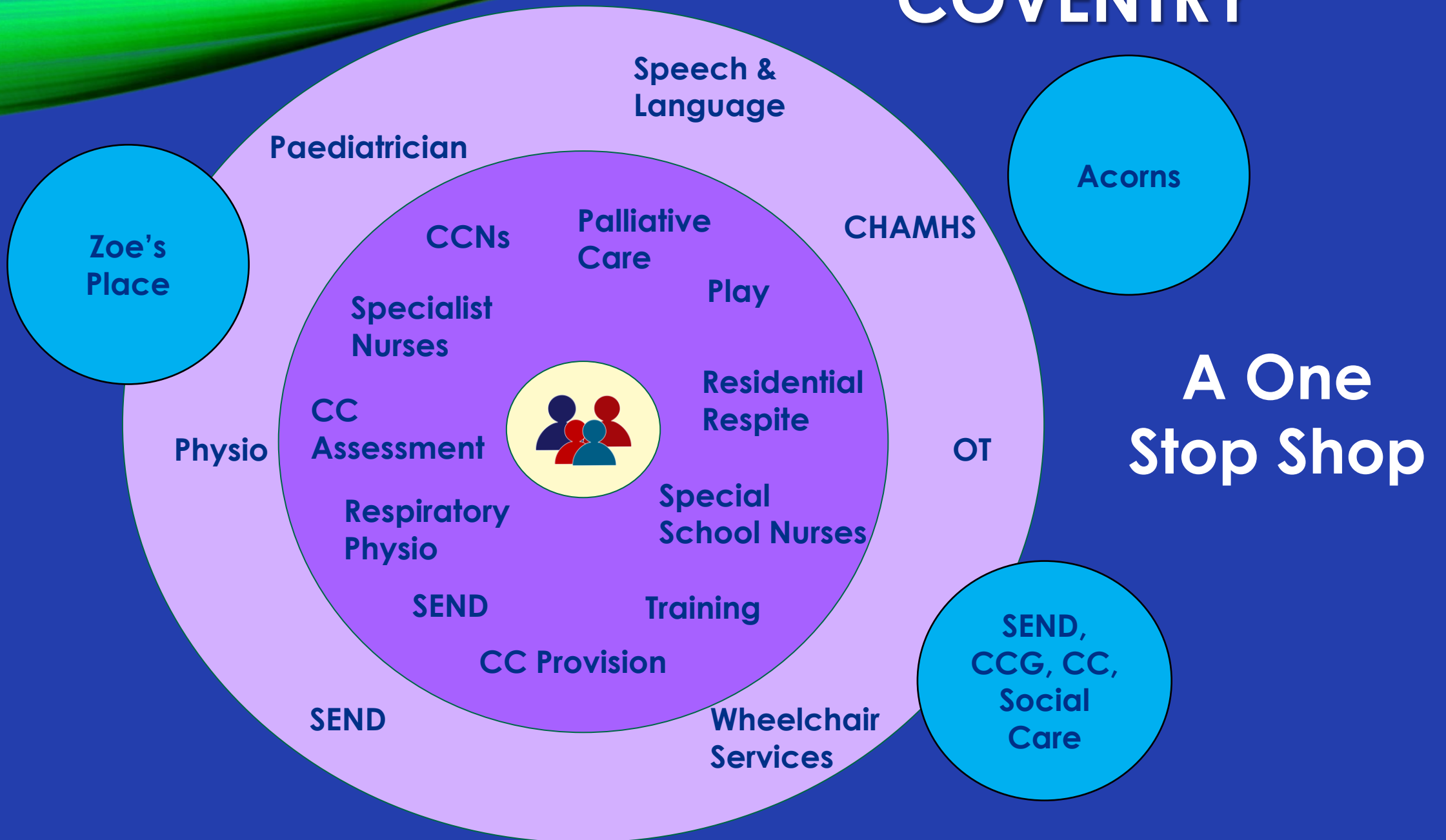
“Do we make it
more complex
than it needs to
be?”

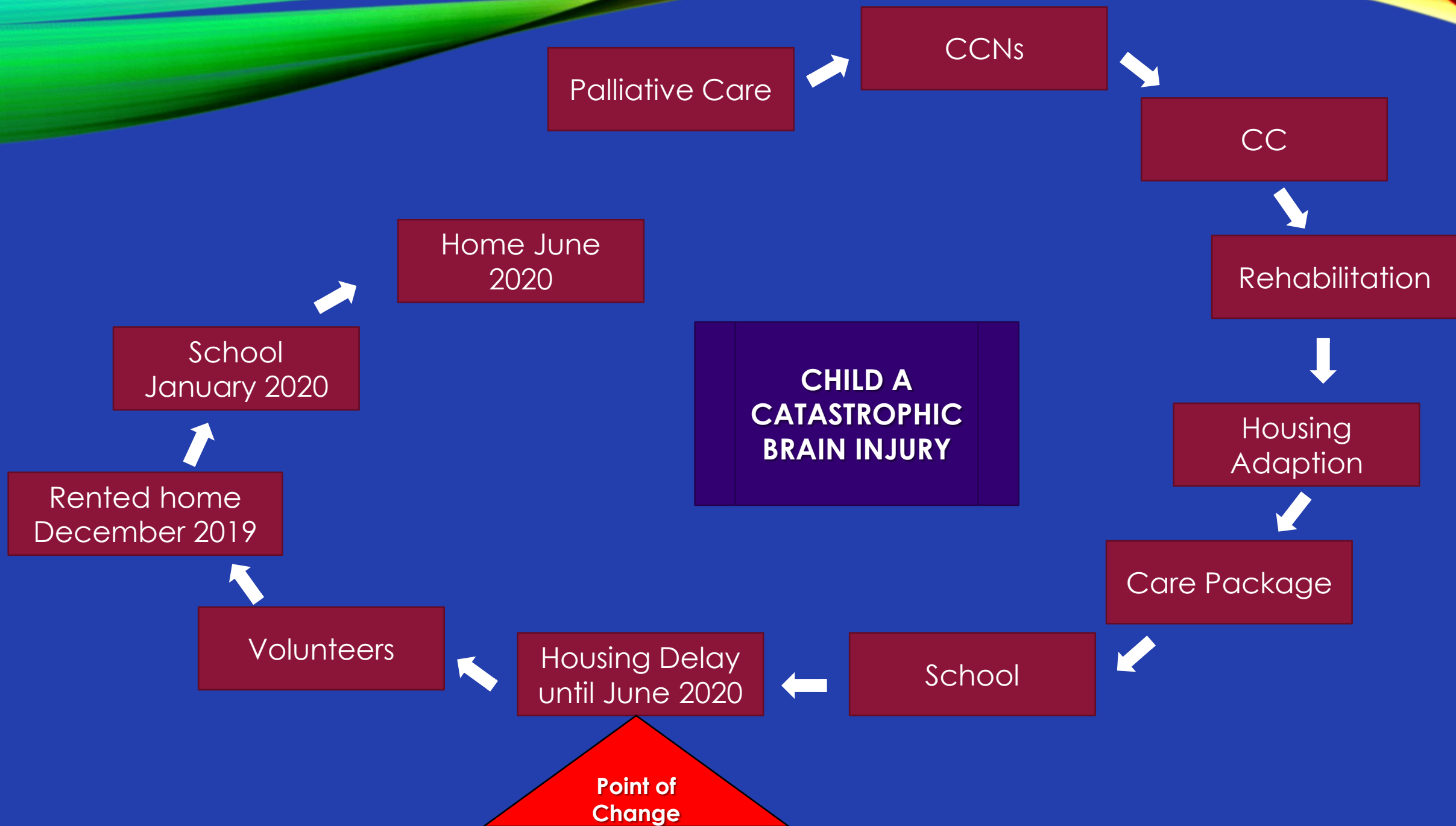
“Does a lack of
integration prevent
holistic decisions?”

WARWICKSHIRE

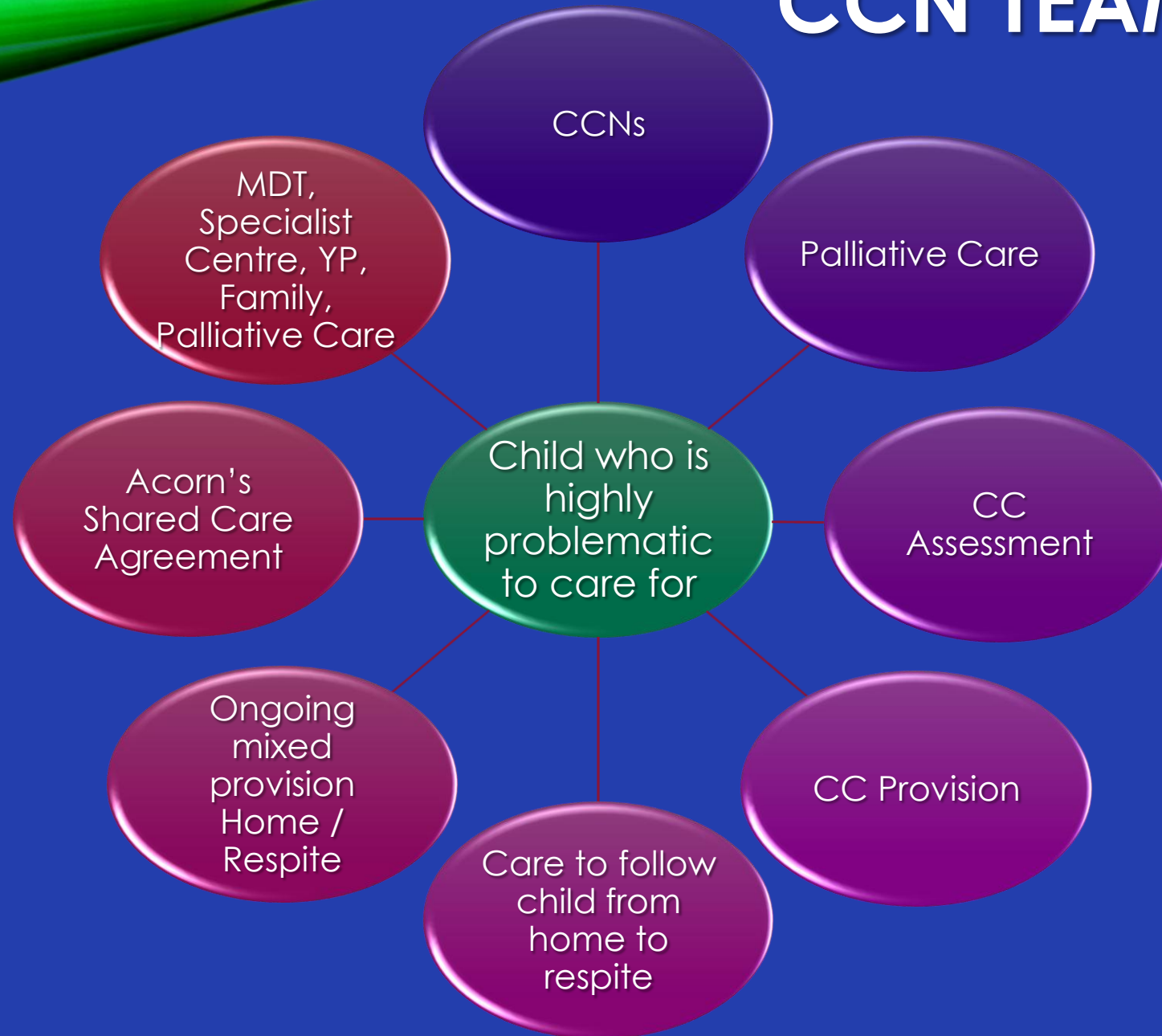


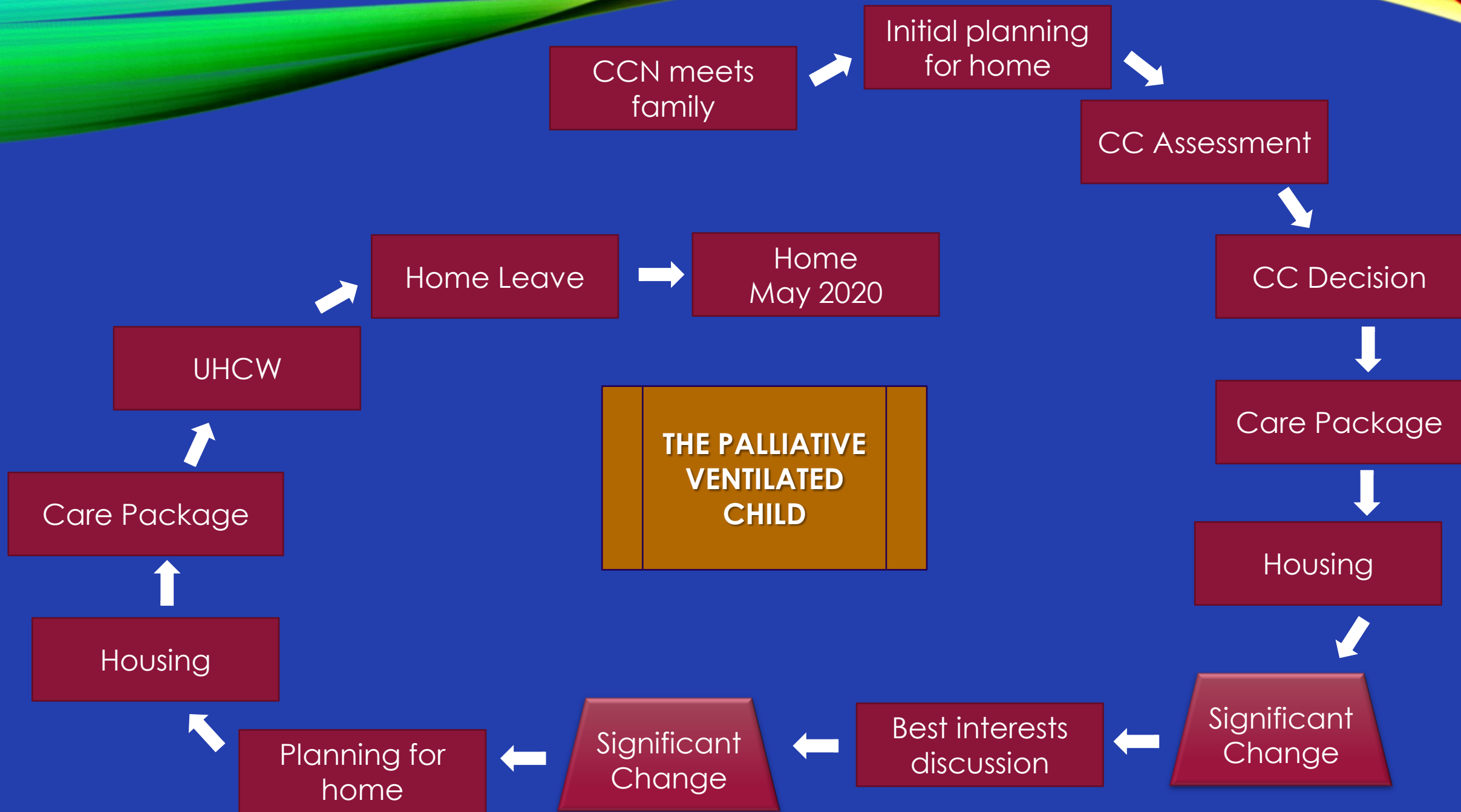
COVENTRY





CCN TEAM

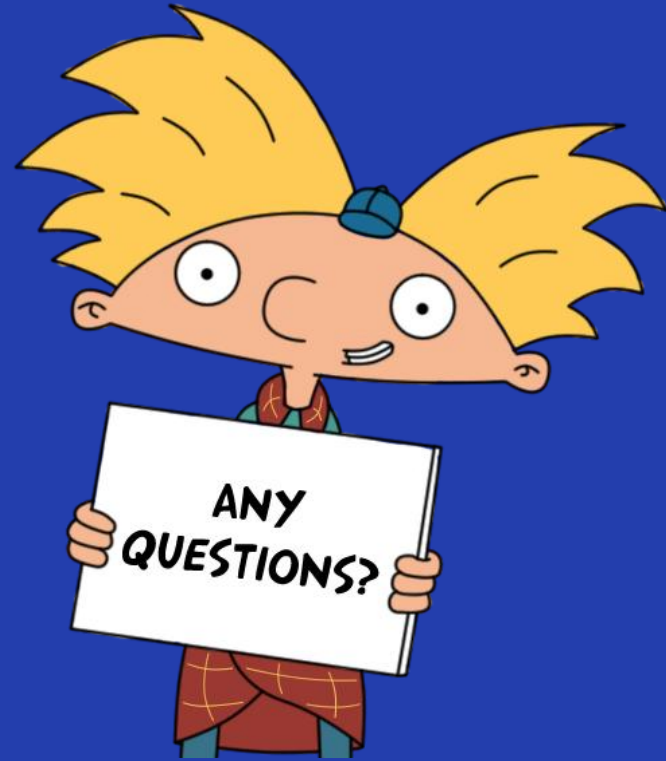




LEARNING POINTS

- Integration matches CYP & family aims.
- Palliative care is part of good care.
- Providers have a unique & valuable role in good commissioning.
- Integration supports workforce better in complex emotive and challenging cases.
- Systems have to be able to cope with rapid changes.
- Integrated services are more holistic, responsive and reactive.





David Widdas

david.Widdas@nhs.net

Tel: 01827891727