

SANTANDER

The project proposes to create an outstanding contemporary primary workplace for Santander equipped to support current and future demands of the contemporary workplace.

A balanced simplicity of design is brought to bear over the site. Spaces are appropriately scaled, providing a similar feeling of comfort if you were in an intimate courtyard or in the wider public realm beyond. The spaces are designed for familiarity and as a counterpoint to the commercial role of the facility. Site legibility is key within the public realm. Guiding principles include: the movement of people, the opportunity to stop, and the integration of sub-spaces within a cohesive whole.

There are a range of courtyard and plaza spaces within the site. They share certain characteristics such as: defining various spaces for contemplation or conversation, providing a sheltered microclimate for the comfort of visitors, providing interest through seasonal planting, the judicious use of materials, and providing clearly defined spaces and secure limits.

LOCATION : Milton Keynes, UK

DESIGN TEAM :

APPROX. AREA : 2.5 hectares

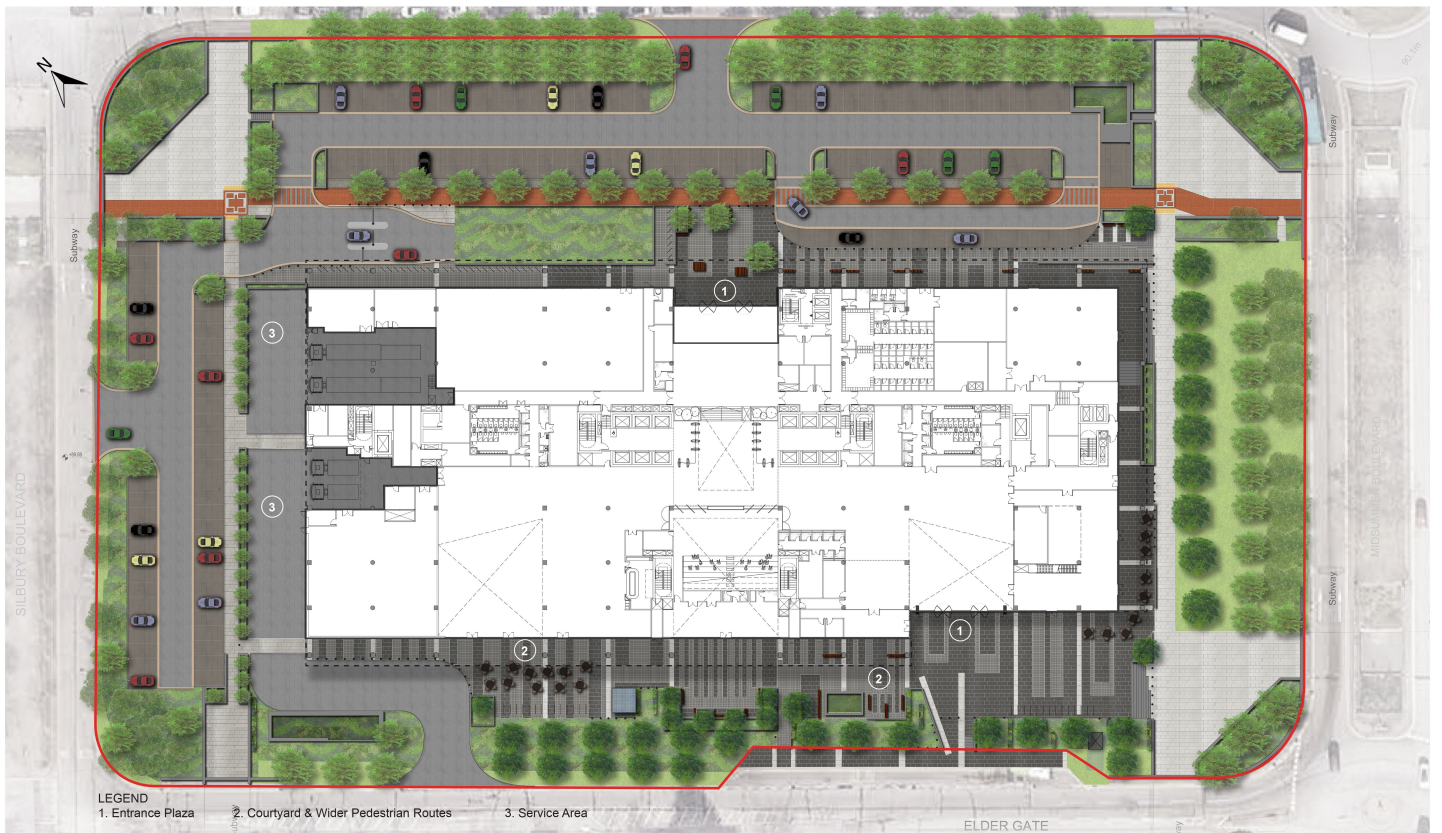
Architect: LOM architecture and design
Engineer: WSP

YEAR : 2018 - On Going

CLIENT : Osbourne & Co



Aerial Views



Landscape Masterplan

ROOF TERRACES



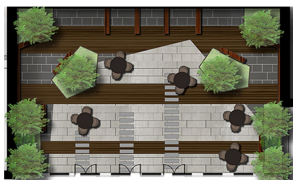
Roof Terraces; Activity Area, Running Track, Fitness Zone, Yoga Lawn



Roof Terrace View



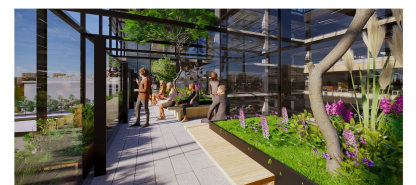
Office Meeting Terraces



Bar/Dining Roof Terraces



Garden Bridge_Private/Meeting Terrace



Garden Bridge View

